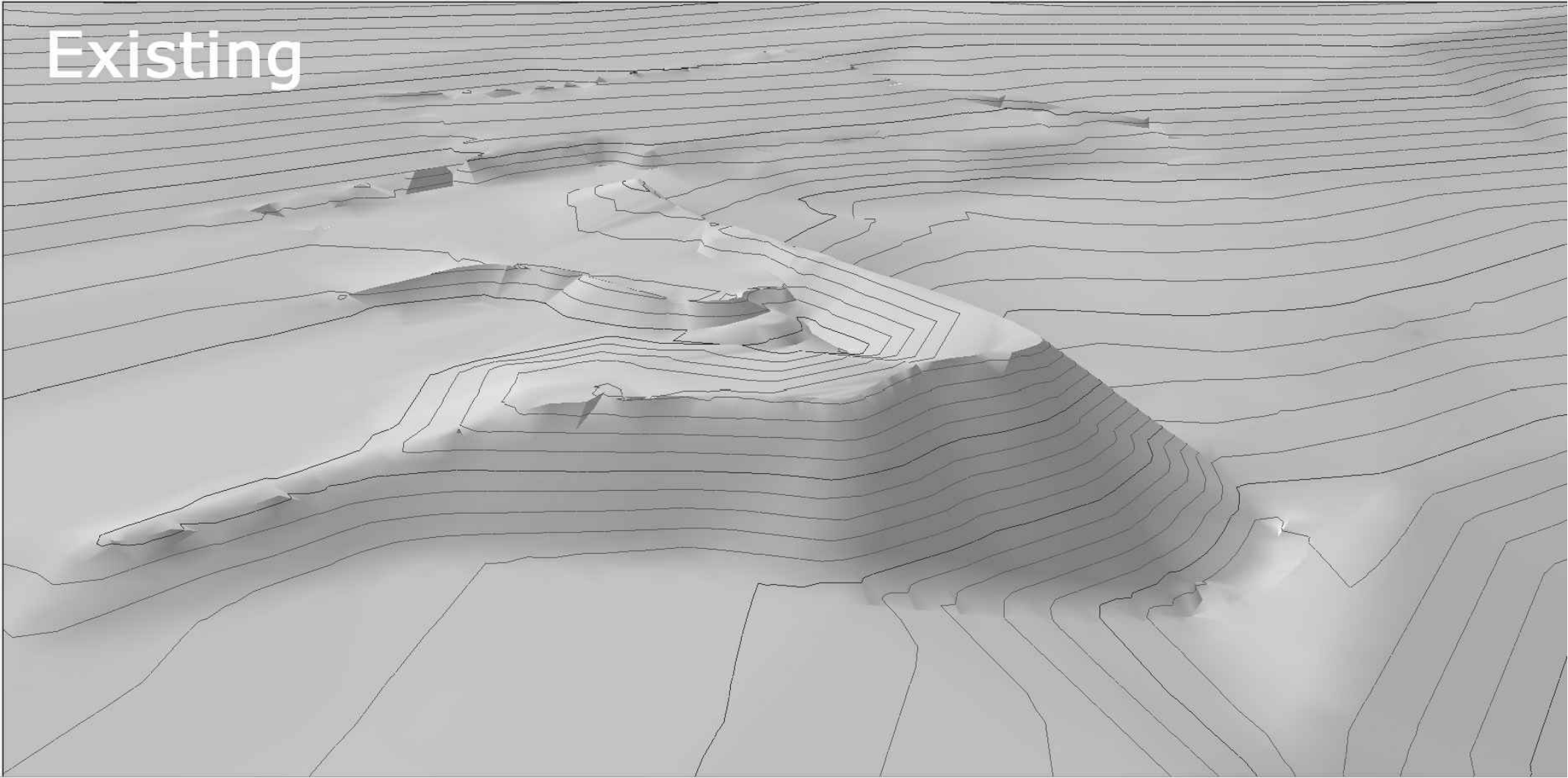
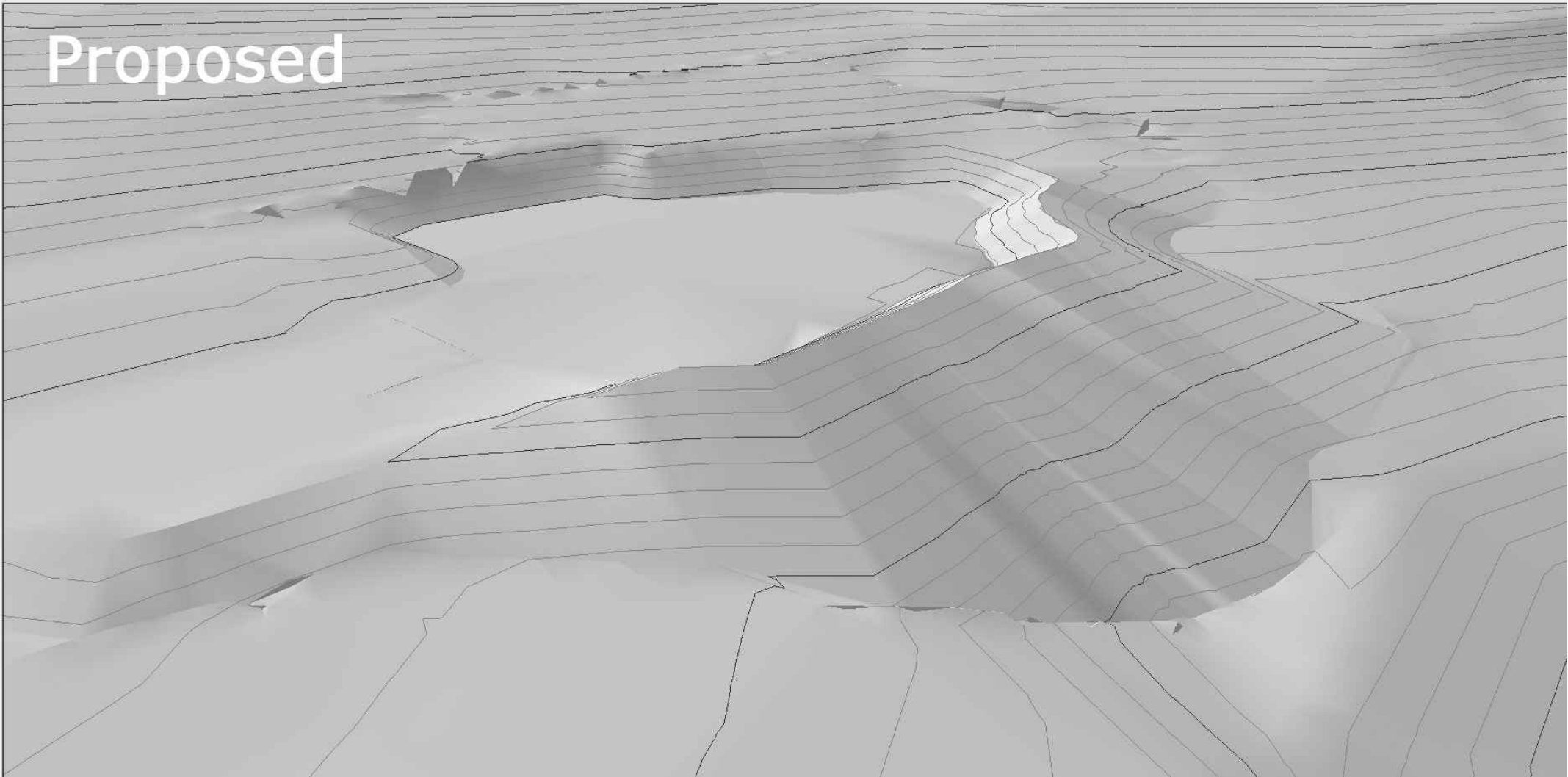


Existing



Proposed



Existing and Proposed views from 3D digital terrain model. View is facing north-west from an aerial perspective

	Project	Scale @ size	Date	Drawing No.	Revision	Drawn by	Checked by	Status
	Energy Coast Business Park North	-	Dec 2016	ECBP 301	Rev_5	P Mason	S Galpin	PLANNING
	Client	Project Location		Drawing Title		Revisions		
	Beckermet Estates	Energy Coast Business Park, Beckermet, Cumbria		Existing/Proposed 3D DTM View (SE)		Rev_3 - Reposition top of bund at north off site Rev_4 - Lower upper area (unit A) to levels of rest of area (12.12.16) Rev_5 - Embankment amended (28.03.18)		

email info@galpinlandscape.com
web www.galpinlandscape.com