



BAKER ■ MALLETT
QUANTITY SURVEYORS ■ PROJECT MANAGEMENT ■ CDMC

A FIRST CLASS SUPPLIER

PRE-CONSTRUCTION INFORMATION PACK

Beckermet North
Ground Reprofilng
Haile, Egremont
Cumbria
January 2017

Date:

PRECONSTRUCTION INFORMATION

REVISIONS

<u>Revision</u>	<u>Date</u>	<u>Amended By</u>	<u>Comment</u>
Or	10/01/17	S Jackson	Initial Draft – issued for comment

PRECONSTRUCTION INFORMATION

INDEX TO CONTENTS

CDM Statement

Declaration by Company Submitting a Tender (to be returned with tender)

1.000 DESCRIPTION OF THE PROJECT

1.100 Project description

1.101 Location

1.102 Works

1.103 Type of Structure

1.200 Project programme details

1.201 Date of possession as stated in the Contract Documents

1.202 Date for completion

1.203 Programme of work activities

1.300 Details of main parties

1.301 Client

1.302 Architect/Contract Administrator

1.303 Principal Designer

1.304 CDM Advisor

1.305 Quantity Surveyor

1.306 Principal Contractor

1.400 Purpose of Completed Project

1.401 Workplace Regulations

1.500 Extent and location of existing plans

1.501 Existing Health and Safety File

1.502 Drawings and other information

1.503 Accuracy of drawings

1.504 Existing Services

1.600 Other Information

1.601 Existing Use

1.602 Pre-commencement liaison regarding services work

1.603 Early or Enabling works

1.604 Planning Restrictions

2.000 CLIENT'S CONSIDERATIONS AND MANAGEMENT REQUIREMENTS

2.100 Structure and Organisation, Planning and Managing the Construction Work

2.101 Management structure and construction project team responsibilities, on and off site

2.102 Arrangements for training, provision of health and safety information and site induction

2.200 Health and Safety goals for the project:

2.201 Health and safety goals for the project

2.300 Communication and Liaison between Client and Others:

- 2.301 Arrangements for liaison between parties
- 2.302 Arrangements for regular liaison between parties on site
- 2.303 Arrangements for the production and review of risk assessments and method statements
- 2.304 Method for displaying HSE Notification, Site Rules, etc.
- 2.305 Arrangements for instructing contractors, consulting the workforce and co-ordinating the views of others
- 2.306 Updating the Health and Safety Plan
- 2.400 Security of the Site:**
- 2.401 Security of premises occupied or partly occupied by Client
- 2.402 Arrangements for security and exclusion of unauthorised people
- 2.403 Precautions against theft and vandalism
- 2.404 Site signage
- 2.405 Visitors
- 2.500 Welfare Provision:**
- 2.501 Welfare facilities in the building / Welfare facilities on site / Shared welfare facilities
- 2.600 Health and Safety of the Clients Employees, Customers or Others Involved In the Project:**
- 2.601 Site Hoarding Requirements
- 2.602 Arrangements for safe traffic routes and segregation of vehicles and pedestrians
- 2.603 Permits to work
- 2.604 Fire Prevention and Fire Safety Plan
- 2.605 Breaching Compartment Walls, Floors or Fire Barriers
- 2.606 Emergency Plan, Procedures and Means of Escape
- 2.607 Maintenance of access for emergency services
- 2.608 Arrangements for reporting and investigation of accidents and incidents including near misses under the Reporting of Injuries, Diseases and Dangerous Occurrences Regulations (RIDDOR) 1995
- 2.609 Contract Requirements
- 2.610 Client's rules regarding noise generation and vibration
- 2.611 Client's rules regarding working constraints
- 2.612 Working hours
- 2.613 Services isolation
- 2.614 Personal Protective Equipment
- 2.615 Smoking on site
- 2.616 Mobile phones
- 2.617 Personal Music Players on site
- 2.618 Tidy Site
- 2.619 Rubbish Removal
- 2.620 Burning on site
- 2.621 Plant
- 2.622 Hot work
- 2.623 Parking restrictions to be observed
- 2.624 Contractors and Self-employed people
- 2.625 Statutory Instruments
- 2.626 Contractor's designer's competence
- 2.627 Contractor competence

3.000 ENVIRONMENTAL RESTRICTIONS AND EXISTING ON-SITE RISKS

3.100 Existing, previous and new structures

3.101 Adjacent and local buildings

3.200 Ground conditions

3.201 Ground conditions

3.300 Location of existing services

3.301 Arrangements for controlling risks from services, including temporary electrical installations

3.302 Locating services

3.400 Safety hazards

3.401 Boundaries and access, including temporary access

3.402 Adjacent and access, including temporary access

3.403 Existing traffic systems and restrictions

3.404 Site Conditions

3.405 Protection of children and visitors

3.406 Site Lighting

3.407 Vehicles to be safely loaded, etc.

3.408 Buried electrical services within walls and floor voids

3.409 Overhead cables

3.410 Wall restraint

3.411 Stressing the structure

3.412 Roof lights and roof work

3.413 Prevent trips and falls

3.414 Work at heights

3.415 Protection of people below work area

3.416 Arrangements for controlling lifting operations

3.417 Arrangements for providing and maintaining plant and equipment

3.418 Materials storage

3.419 Arrangements for storage and distribution of materials

3.500 Health hazards

3.501 Leptospirosis

3.502 Legionella

3.503 Cryptococcosis, Psittacosis and Histoplasmosis

3.504 Asbestos

3.505 Dust and fumes

3.506 Arrangements for reducing Noise and vibration

3.507 Health risks arising from manual handling

3.508 Heavy materials or plant

3.509 Arrangements for storage of hazardous materials

3.510 Arrangements for dealing with health risks when using hazardous substances

3.511 Hazardous materials – toxic chemicals, refrigerants, inflammable liquids

3.512 Hazards – toxic chemicals, insecticides, pesticides, fungicides, herbicides

3.513 Hazards – paints, adhesives, fillers, pitch polymers to be identified

3.514 Use of lead

3.515 Fluorescent tubes

3.516 Controlled waste

3.517 Arrangements for controlling other significant health and safety risks

4.000 SIGNIFICANT DESIGN AND CONSTRUCTION HAZARDS

4.100 Design assumptions and control measures

4.101 Principles of the structural design

4.200 Information on significant health and safety risks identified during design

4.201 Arrangements for the exchange of design information between the client, Principal Designer, Designers, Principal Contractor and Contractors on site

4.202 Arrangements for co-ordination of on-going design work and design changes (substantial, unforeseen or otherwise) during the project

4.300 Information on Significant health and Safety risks identified during design

4.301 Significant health and Safety risks

4.400 Materials requiring particular precautions

4.401 Materials/activities identified as constituting a health hazard (COSHH)

4.402 COSHH Assessments

4.403 Health and Safety data sheets (to be retained for the Health and Safety File)

5.000 THE HEALTH AND SAFETY FILE

5.100 Format and content

5.101 Date when draft information for Health and Safety File to be submitted

5.502 Date when final version of information for Health and Safety File to be submitted

5.503 Date of Handover of Health and Safety File by the Principal Designer to the Client

5.200 Layout and format

5.201 Content

5.202 Layout and format

5.300 Storage of Information

5.301 Storage of information

APPENDICES

A Site Location Plans

B Drawings and Other Information

C Surveys and Reports

D Designer Residual Risk Register and COSHH Assessments

E Not used

F Not used

G Not used

H Health and Safety File Template

**CDM Regulations 2015
TENDER REGULATIONS
REQUIRED – CDM STATEMENT**

The following is an outline of the CDM process that will apply for these works:

Outline of Regulations

1. The Client is legally obliged to comply with the above noted regulations which came into force on 6 April 2015.
2. These regulations require that on most non-domestic projects, a Client appoints a Principal Designer and a Principal Contractor to act on their behalf. The Client and Principal Designer are required to collect and collate information provided by Client and Designers, Principal Contractor and Contractors to enable preparation of a Pre-Construction Information Pack, which is issued to you as a Principal Contractor during the procurement process.
3. The Client, Principal Designer and Designers have liaised from project inception and throughout the design stage to ensure that the project can be built safely, used safely and maintained safely.
4. The final part of the CDM process places major responsibility on the selected "Principal Contractor" who has full responsibility for CDM matters related to all Contractors on site, including "self-employed" status workforce, as regards the safe construction of the project and protection of Employees, the general public and all who visit the project "site". The Client is required to give "formal notification" to the Health and Safety Executive of (a) design commencement and (b) the construction period using F10 (Rev) before works start on site. This duty may be carried out by the Clients Competent Person, and updated periodically through the life of the project to reflect the parties involved in the project.
5. Throughout the life of the project the Principal Contractor is required to submit information to the Principal Designer to include in the Health and Safety File, as the project progresses. The file will be retained by the Client.

Signed: _____

Amanda McCartney MRICS, IMaPS, TechIOSH, ACInstCES
(CDM and Construction Health & Safety Advisor)

For Baker Mallett LLP

**CDM Regulations 2015
DECLARATION BY COMPANY
SUBMITTING A TENDER**

Name of Company
and address

Signature of person in Company
responsible for Health and Safety

1. We the Company named above confirm that we have read and noted the CDM Statement appended being part of the tender documentation. We confirm that we have taken all necessary steps to acquaint ourselves with the requirements of the Construction (Design and Management) Regulations 6 April 2015. We confirm that we have a Company Health and Safety Policy and that our workforce is fully trained in Health and Safety as appropriate to their duties on site.

Furthermore we accept that in submitting a tender for this work we do so as "Principal Contractor" and accept all that this entails.

Should The Client accept our tender for this work we accept that it will be conditional upon our company accepting the undernoted points 2 (a-e) inclusive.

2. Health and Safety (CDM Regulations) 2015 Provisions for the Works

- a) As Principal Contractor we will respond to details within the Pre-Construction Information Pack with Method Statements prepared to deal with these items. This will be shown at tender stage.
- b) That on the contract being awarded to us we will, as "Principal Contractor", prepare a suitable Construction Phase Health and Safety Plan incorporating the information provided in the Pre-Construction information pack and information derived from a site survey and other appropriate sources of Information. An example list of information required for the preparation of the Health and Safety File are attached to this document.
- c) We will identify the financial allowances made in our tender for the Health and Safety at Work Act and the requirements of the Construction (Design and Management) Regulations 6 April 2015.
- d) We will give all necessary and requested information to the appointed Principal Designer to enable the Health and Safety File to be compiled for the Client's retention on completion of the project.
- e) During the contract where the responsibility for action in respect of the CDM Regulations 2015 falls to us as the Principal Contractor, we confirm this will not result in any additional costs to Client, prior to, during, or in the final settlement of accounts, for the project.

PRE-CONSTRUCTION INFORMATION

1.000 DESCRIPTION OF THE PROJECT

1.100 Project Description:

- 1.101 Location: Energy Coast Business Park, Haile, Egremont, Cumbria. CA22 2NH
- 1.102 Works: The works comprise the regrading of the existing iron ore spoil heap, topsoiling, seeding, and planting; to create a screened plateau onto which to relocate the existing waste transfer station.
- 1.103 Location: See attached Location Plan.

1.200 Project Programme details

- 1.201 Date of possession: May 2017
- 1.202 Date for completion: Within 12 months of date of possession.
- 1.203 Programme of work activities must be provided by Principal Contractor prior to commencement of the Construction Phase.

1.300 Details of main parties

- 1.301 Client: Beckermet Estates Limited
Whinbank Farm
Distington
Workington
Cumbria
CA14 4QH
- Telephone: 01946 830305
- Contact: Mark Thomson
- 1.302 Contract Administrator: Baker Mallett LLP
Seamill Suite
Fleswick Court
Crow Park Way
Westlakes Science and Technology Park
Moor Row
WHITEHAVEN
Cumbria
CA24 3HZ
- Telephone: 01946 66377

- Contact: Stephen Jackson
- 1.303 Principal Designer: Baker Mallett LLP
Seamill Suite
Fleswick Court
Crow Park Way
Westlakes Science and Technology Park
Moor Row
WHITEHAVEN
Cumbria
CA24 3HZ
- Telephone: 01946 66377
- Contact: Stephen Jackson
- 1.304 CDM Advisor Baker Mallett LLP
Seamill Suite
Fleswick Court
Crow Park Way
Westlakes Science and Technology Park
Moor Row
WHITEHAVEN
Cumbria
CA24 3HZ
- Telephone: 01946 66377
- Contact: Amanda McCartney
- 1.305 Landscape Architect Galpin Landscape Architecture Limited
3, Crescent Road
WINDERMERE
Cumbria
LA23 1EA
- Telephone: 015394 46115
- Contact: Stuart Galpin
- 1.306 Principal Contractor: The contractor to whom the Client awards an official order to carry out the works.

1.400 Purpose of Completed Project

1.401 The completed project will be used as a workplace as defined by the requirements of the Workplace (Health, Safety and Welfare) Regulations 1992, and related legislation.

1.500 Extent and location of existing plans

1.501 Existing Health and Safety File: A Health and Safety File and Operations and Maintenance Manual do not exist for this site.

1.502 Drawings and other information: Refer to Appendix B.

1.503 Accuracy of drawings: The Principal Contractor is advised that the drawings provided by the client may not be entirely accurate or provide a complete record. The Principal Contractor should verify their accuracy in consultation with the Architect/Contract Administrator prior to commencing work.

1.504 *Existing Services: The Principal Contractor must make all necessary enquiries and carry out a site survey prior to commencement of any works.

1.600 Other Information

1.601 Existing use: Iron Ore spoil heap and grassland.

1.602 Pre-commencement liaison regarding services work: The Principal Contractor shall liaise with the consultant engineers and refer to their drawings before commencing work. It should not be assumed that all services are shown on the drawings.

1.603 Early or enabling works: demolition, site clearance, services diversions, unusual site preparation works, archaeological excavations, staged completions, etc., already carried out as follows:

- a. Phase One Habitat Survey and Scoping Survey for European Protected Species
- b. Tree and Hedge Survey
- c. Phase One Desk Top Study Report and Environmental Risk Assessment

1.604 Planning Restrictions: Planning has not yet been obtained

2.000 CLIENT'S CONSIDERATIONS AND MANAGEMENT REQUIREMENTS

2.100 Structure and Organisation, Planning and Managing the Construction Work

2.101 Management structure on and off site: The Principal Contractor must detail in the Construction Phase Health and Safety Plan, the management structure within their organisation, for the project.

2.102 Arrangements for training, provision of health and safety information and site induction: The Principal Contractor must detail in the Construction Phase Health and Safety Plan, the provisions made for training, provision of health and safety information and site inductions relevant to the work to be carried out on site.

2.200 Health and safety goals for the project:

2.201 Health and safety goals for the project: The Principal Contractor must provide details of the arrangements for monitoring and reviewing of health and safety performance to meet site objectives and legal requirements, both during and after the construction period.

2.300 Communication and Liaison between the Client and Others:

2.301 Arrangements for liaison between parties: The Client will appoint a liaison officer with a working knowledge of the day-to-day activities of the Client's operations. The Principal Contractor's agent will regularly consult with the liaison officer about the progress of the works and the interface with the Client's undertakings, with particular regard to the timing of activities, the erection/dismantling of temporary boundaries and scaffolding and the timing when hazardous or disruptive work may or may not take place.

2.302 Arrangements for regular liaison between parties on site: The Principal Contractor shall detail his proposals in the Construction Phase Health and Safety Plan.

2.303 Arrangements for the production and review of the Construction Phase Health and Safety Plan, risk assessments and method statements: The Principal Contractor shall provide to the Client or Clients Representative, at least **14** days **prior to commencement of any work**, the risk assessments and method statements for review and comment. Work must not be carried out until a suitable and sufficient plan is in place and the Welfare arrangements have been agreed and available.

2.304 Method for displaying HSE Notification, Site Rules etc., applicable to contractors, workers, visitors, etc.: The Principal Contractor shall identify the arrangements in place for displaying the statutory documentation on site.

2.305 Arrangements for instructing contractors, consulting the workforce and co-ordinating the views of others: The Principal Contractor shall provide details in the Construction Phase Health and Safety Plan.

2.306 Updating the Health and Safety Plan: The Principal Contractor shall update the Construction Phase plan as required to accommodate changes on site. The Client has a duty to ensure that the Plan is being kept up to date throughout the duration of the work on site.

2.400 Security of the Site:

2.401 Security of Premises occupied or partly occupied by Client: The Principal Contractor shall ensure that steps are taken to limit the number of people on site to those directly concerned with the construction work and to ensure that the security of the building as a whole is maintained and that the security of the Client's undertaking is preserved. The Principal Contractor is required to discuss arrangements with the Client's representative before commencing work.

2.402 Arrangements for security and exclusion of unauthorised people: The Principal Contractor shall provide details in the Construction Phase Health & Safety Plan.

2.403 Precautions against Theft and Vandalism: the Principal Contractor is advised to take precautions for the health and safety of the employees and third parties.

2.404 Site signage: The Principal Contractor shall identify by clear signage, the location of the Site Office, First Aid facilities and any safety hazards such as weak roofs, dangerous ground and scaffolding which is out of use. Reliance should not depend entirely on written warning signs where there is a possibility that some people, e.g. young children, may not be able to read them.

2.405 Visitors: The Principal Contractor shall describe the procedure for controlling access to site by visitors, providing a suitable induction and advise them of any hazards on the site.

2.406 Adjacent property: The Principal Contractor shall take such steps as necessary to protect adjacent properties from damage and to prevent the workforce from trespassing on neighbouring sites.

2.500 Welfare Provision:

2.501 *Welfare facilities on site: The Principal Contractor shall provide and maintain such health and welfare facilities as are required in accordance with Schedule 2 of the CDM Regulations.

2.600 Health and Safety of the Clients Employees, Customers or Others Involved In the Project:

2.601 *Site Hoarding Requirements: None required for this project, although the tree and hedge protection measures detailed in the Tree and Hedge Survey Report. Copy enclosed at Appendix C.

- 2.602 Arrangements for safe traffic routes and segregation of vehicles and pedestrians: The Principal Contractor should attached a layout plan to the Construction Phase Health and Safety Plan describing access/egress, safe routes for third parties, pedestrian and vehicular controls, signage, loading/unloading and vehicle movements, parking, site security arrangements, hoardings and lighting and the location of temporary site accommodation and welfare facilities. Areas where the Principal Contractor is not required to access shall be barriered off. Safe working routes shall be defined before commencement of any work.
- 2.603 Permits to work: Not required.
- 2.604 Opening up highways: Not applicable
- 2.605 Fire Prevention and Fire Safety Plan: The Principal Contractor shall take note of the Fire Safety Order (2005), Joint Fire Code of Practice published by the Building Employers' Confederation, the Loss Prevention Council and the National Contractors' Group entitled Fire Prevention on Construction Sites and take action where the Code demands. The Principal Contractor shall prepare and regularly update a Site Fire Safety Plan to be incorporated within or referenced to the Health and Safety Plans showing fire escape routes and muster point and state the proposed arrangements to prevent fire arising and spreading during the construction works, and in temporary accommodation.
- 2.606 Emergency Plan and Means of Escape: The Principal Contractor shall describe in the Construction Phase Health and Safety Plan, the accident and emergency procedures and Means of escape for the site, taking into consideration local site factors. This should also be displayed on the site Notice board and updated at regular intervals to suit progress on site and the effect this may have on escape routes.
- 2.607 Maintenance of access for emergency services: must be ensured at all times for fire appliances, refuse vehicles, ambulances, etc.
- 2.608 Arrangements for reporting and investigation of accidents and incidents: The Principal Contractor must detail the procedures for reporting and investigating accidents and incidents, including near misses under the Reporting of Injuries, Diseases and Dangerous Occurrences Regulations (RIDDOR) 1995, as amended in 2012 and 2013.
- 2.609 Contract Requirements: The Principal Contractor is required to comply with the requirements of the Contract Preliminaries. Any area of conflict between the Health and Safety Plan and the Contract Documents shall be brought to the attention of the Contract Administrator and the Principal Designer.
- 2.610 Client's rules regarding noise generation and vibration: The Principal Contractor shall comply with industry legislation and good practice.
- 2.611 Client's rules regarding working constraints: The Principal Contractor is required to leave the site in a safe, clean and non-hazardous condition at the end of each working day.
- 2.612 Working Hours: are generally limited to the normal working hours defined in the National Working Rules for the Building Industry as produced by the National Joint Council for the Building Industry and as modified for the area in which the works are located. Written permission will be required from the Contract Administrator to permit weekend working.

- 2.613 Services Isolation: The Principal Contractor is required to obtain permission from the Contract Administrator before shutting off any service. The Principal Contractor must comply with the Client's Safety Rules.
- 2.614 Personal protection: Appropriate PPE, as determined by risk assessment, will be worn as a minimum requirement throughout the duration of the contract, both inside and outside the building. These shall be available for visitors. Personal protective equipment shall be provided for all those who require it.
- 2.615 Smoking on site: Smoking is not permitted at the workplace.
- 2.616 Mobile phones: Mobile phones for personal use are not permitted in the workplace unless agreed with the Contract Administrator prior to the commencement of the works.
- 2.617 Personal Music players on site: Radios, including Walkman type personal radios are not permitted at the workplace.
- 2.618 Tidy Site: The Principal Contractor shall maintain the site in a tidy condition, especially along emergency escape routes, pedestrian accesses and vehicular routes.
- 2.619 Rubbish removal: Skips with inflammable or potentially hazardous or toxic waste must not be left in public areas
- 2.620 Burning on site: No burning will be permitted on site.
- 2.621 Plant: All portable equipment not in use shall be isolated and carefully stored. Items of plant not in use shall be rendered safe and isolated
- 2.622 Hot work: The Principal contractor shall describe in the construction Phase Health and Safety Pan the arrangements for "Hot Works" including a permit system.
- 2.623 Parking restrictions to be observed: Parking should be with consideration for other road users.
- 2.624 Contractors and Self-employed people: It is a requirement under the Construction (Design and Management) Regulations 2015 that the Principal Contractor ensures that contractors and self-employed people working on the site are made aware of the relevant portions of the Health and Safety Plan.
- 2.625 Statutory Instruments: During the course of the building works, Contractors shall pay attention to the relevant Statutory Instruments as updated.
- 2.626 Contractor's designer's competence: The Principal Contractor is required to ensure that any Designers responsible for any design work instigated by him are competent in terms of the Construction (Design and Management Regulations) 2015.
- 2.627 Contractor Competence: The Principal Contractor is required to check the competence of any domestic or named Contractor for the purposes of complying with the Construction (Design and Management) Regulations 2015.

3.000 ENVIRONMENTAL RESTRICTIONS AND EXISTING ON-SITE RISKS

3.100 Existing, previous and new structures

3.101 Adjacent and local buildings include: Commercial Businesses and farm facilities.

3.102 Buildings since demolished: The Principal Contractor should note that part of the site was previously used for Iron Ore Mining. For further information, refer to the Drawings and Desktop Environmental Report.

3.200 Ground conditions:

3.201 Ground conditions: The Principal Contractor should refer to the Phase One Desk Top Study Report and Environmental Risk Assessment (refer to Appendix C).

3.202 Previous land uses include the undernoted:

- Iron Ore mining

3.203 Contaminated land including results of surveys: The known ground hazards are as described under/in the Phase One Desk Top Study Report and Environmental Risk Assessment (refer to Appendix C).

3.204 Arrangements for dealing with health risks from contaminated land: The Principal Contractor shall describe the proposals in the Construction Phase Health and Safety Plan.

3.205 Arrangements for dealing with risks from poor ground conditions: The Principal Contractor shall describe the proposals in the Construction Phase Health and Safety Plan.

3.300 Location of existing services

3.301 Arrangements for controlling risks from services, including temporary electrical installations: The Principal Contractor shall describe the proposals in the Construction Phase Health and Safety Plan. This should include any risks associated with locating existing services, diverting services and protecting services - particularly in exposed or vulnerable locations.

3.302 Locating Services: The Principal Contractor will be expected to make all reasonable enquiries with the relevant authorities and to carry out such site investigations as may prove necessary to locate existing services prior to commencing work on site.

3.303 Overhead services: Refer to the existing site layout drawings.

3.304 Water Services: Refer to the existing site layout drawings.

3.305 Land drains: Refer to the existing site layout drawings.

- 3.306 Drainage services: Refer to the existing site layout drawings.
- 3.307 Sewer services: Refer to the existing site layout drawings.
- 3.400 Safety hazards**
- 3.401 Boundaries and access, including temporary access: refer to tender documents.
- 3.402 Adjacent and local land uses and related restrictions: Due consideration with respect to noise, pollution and nuisance shall be given to local residents.
- 3.403 Existing traffic systems and restrictions: The adjacent area is open to vehicle and pedestrian traffic. Adequate signage shall be erected and maintained by the Principal Contractor at all times to ensure segregation of the public from the works and to advise of hazards and construction traffic.
- 3.404 Site Conditions: The site is exposed and protective measures will need to be taken to ensure working platforms, enclosing sheeting and materials are properly secured.
- 3.405 *Protection of children and other visitors: The Principal Contractor is advised to take precautions to protect children from site hazards.
- 3.406 Site Lighting: Where required by the Local Authority or where public footpaths/roadways are inadequately lit due to the nature of the works, temporary maintained lighting shall be provided..
- 3.407 Vehicles to be safely loaded, etc.: The Principal Contractor shall take such steps as may be necessary to ensure that vehicles leaving the site do not deposit mud or other materials on the public roads system.
- 3.408 Excavation Work: The Principal Contract is required to provide a Method Statement for the proposed method of digging, working in and backfilling deep excavations, including protection against men or vehicles falling in.
- 3.409 Overhead cables: Where working in the vicinity of overhead electric cables, the Principal Contractor shall not use ladders that could transmit electricity. Likewise, the Principal Contractor is required to ascertain what safety precautions are required when using cranes in the vicinity of overhead power lines.
- 3.410 Arrangements for preventing trips and falls: The Principal Contractor shall describe the proposals in the Construction Phase Health and Safety Plan.
- 3.411 Working at Heights: The Principal Contractor shall describe the proposals in the Construction Phase Health and Safety Plan.
- 3.412 Working over Open Water: The Principal Contractor shall describe the proposals in the Construction Phase Health and Safety Plan.

- 3.413 Protection of People below work area: The Principal Contractor shall describe the proposals in the Construction Phase Health and Safety Plan.
- 3.414 Arrangements for controlling lifting operations: The Principal Contractor shall describe the proposals in the Construction Phase Health and Safety Plan.
- 3.415 Arrangements for providing and maintaining plant and equipment used by contractors: The Principal Contractor shall describe the proposals in the Construction Phase Health and Safety Plan.
- 3.416 Material Storage: All materials shall be carefully stored prior to use in an area that can be maintained secure out with working hours. Particular care shall be taken to secure stacked materials from collapsing, and materials should not be piled up on site boundaries where there is a risk of them being accessed by third parties.
- 3.417 Arrangements for storage and distribution of materials: The Principal Contractor shall describe the proposals in the Construction Phase Health and Safety Plan.
- 3.500 Health Hazards**
- 3.501 Leptospirosis (Weil's disease): The Principal Contractor should outline the proposals for preventing exposure to the risk of contracting this disease.
- 3.502 Legionella: The Principal Contractor should outline the proposals for preventing exposure to the risk of contracting this disease.
- 3.503 Cryptococcosis, Psittacosis and Histoplasmosis: The Principal Contractor should outline the proposals for preventing exposure to the risk of contracting these bird and bat dropping related diseases.
- 3.504 Dust and fumes: The Principal Contractor is required to take steps generally to control the emission of dust and fumes, for example by providing screens and/or using dust suppressing equipment. Where creation of dust of fumes is unavoidable, appropriate Personal Protective Equipment is to be worn.
- 3.505 Arrangements for reducing noise and vibration: The Principal Contractor should outline the proposals for noise and vibration control, both in respect of being a hazard to the health of site personnel, and as a potential public, or statutory nuisance.
- 3.506 Health risks arising from manual handling: The Principal Contractor shall describe the proposals in the Construction Phase Health and Safety Plan.
- 3.507 Heavy materials or plant: Where construction materials (e.g. timber, steel or masonry) exceeding 20 kg in weight require to be installed in the building, the Principal Contractor shall describe the method of transporting/unloading/installing same paying due attention to the health and safety aspects associated with handling heavy materials.

-
- 3.508 Arrangements for storage of hazardous materials: The Principal Contractor shall describe the proposals in the Construction Phase Health and Safety Plan.
- 3.509 Arrangements for dealing with health risks when using hazardous substances: The Principal Contractor shall describe the proposals in the Construction Phase Health and Safety Plan.
- 3.510 Hazardous materials including toxic chemicals, refrigerants and inflammable liquids: Principal Contractor's description of the proposed method of working when dealing with the hazardous materials.
- 3.511 Hazardous materials - toxic chemicals, insecticides, pesticides, fungicides and herbicides: The Principal Contractor shall describe in the Health and Safety Plan the method of controlling the use and preventing abuse of dangerous chemicals such as chemical sprays and their containers. Note that certain pesticides require neighbour notification and local bee keepers may be affected. COSHH sheets are required for all chemicals used in landscaping work and must be included in the Health and Safety Plan and retained for the Health and Safety File. The contractor must use certified operators.
- 3.512 Hazards – paints, adhesives, epoxy resin glues, epoxy resin paints, intumescent paint, solvent-based paints, fillers and fire stopping compounds and use of pitch polymers: The Principal Contractor shall comply with manufacturer's instructions regarding application of paints, etc., and take protective measures as necessary for the operative and any third party. Used containers shall be disposed of to a suitable tip. The Principal Contractor shall provide in the Health and Safety Plan a COSHH Assessment for the materials proposed and a Method Statement describing how surplus materials and applicators will be disposed of. These will form part of the Health and Safety File documentation.
- 3.513 Use of Lead: The Principal Contractor shall assess the risks associated with lead work on the project and take such measures as necessary to minimise these risks.
- 3.514 Fluorescent Tubes: The Principal Contractor shall describe in the Health and Safety Plan the method of disposal of redundant fluorescent tubes.
- 3.515 Controlled Waste: The Principal Contractor shall describe in the Construction Phase Health and Safety Plan the proposals for controlling waste on site and disposal of controlled waste. This should make reference to disposal to a registered tip and the documentation required complying with local bylaws and statutory requirements.
- 3.516 Arrangements for controlling other significant health and safety risks: The Principal Contractor shall describe the proposals in the Construction Phase Health and Safety Plan.

4.000 SIGNIFICANT DESIGN AND CONSTRUCTION HAZARDS

4.100 Significant design assumptions and control measures

4.101 *The principles of the design and any precautions that might be needed or sequences of approach that need to be followed during construction should be described by the Principal Contractor in the Construction Phase Health and Safety Plan.

4.200 Arrangements for co-ordination of ongoing design work and handling design changes

4.201 Arrangements for the exchange of design information between the client, designers and contractors on site: Where elements of the design are carried out by the Principal Contractor or his Sub-contractor, the Principal Contractor should advise the Principal Designer. The Principal Designer may request details of the work proposed to ensure that adequate information will be provided for inclusion in the Construction Phase Health and Safety Plan and/or Health and Safety File and that the design is fully co-ordinated between designers. This relates only to the Health and Safety aspects of the design and does not imply acceptance of the design by the Contract Administrator. The Principal Contractor should identify these items.

4.202 Arrangements for co-ordination of on-going design work and design changes (substantial, unforeseen or otherwise which may or may not result in substantial design change and that might affect resources): Changes in design, or changes which negate primary assumptions made in the Health and Safety Plan, whether made by the Design Team or the Principal Contractor, and which may significantly affect the Principal Contractor's Construction Phase Health and Safety Plan, sequence of working or the resources necessary to comply with Health and Safety legislation, shall be referred to the Principal Designer and agreed by the Client in writing before any change is implemented. This relates only to the Health and Safety aspects of the Health and Safety aspects of the design and does not imply acceptance of the design by the Contract Administrator.

4.300 Information on significant health and safety risks identified during design

4.301 Significant health and safety risks where control is specified by Designers are included at Appendix D.

4.400 Materials requiring particular precautions

4.401 Materials or activities that have been identified by the Designer as constituting a hazard to health (Control of Substances Hazardous to Health (COSHH) Assessments) are listed in Appendix D.

4.402 COSHH Assessments: Common materials used during construction may present health and safety hazards requiring the Principal Contractor to carry out COSHH or other risk assessments and to introduce control measures which should be included in the Health

and Safety Plan. They are deemed to be within the normal experience of a competent contractor and therefore have not been listed here.

- 4.403 Health and Safety Data Sheets: The Principal Contractor is requested to attach Safety Data Sheets as required under Regulation 6 of the Chemicals (Hazard Information and Packaging for Supply) Regulations (CHIP3) 2002 (Amended 2005) as appropriate to the Health and Safety Plan. These are to be retained for inclusion with the Health and Safety File.

5.000 THE HEALTH AND SAFETY FILE

5.100 General

- 5.101 The Health and Safety file information should be submitted to the Principal Designer at regular intervals throughout the project. Date when draft information for the Health and Safety File to be submitted to the Principal Designer is 2 weeks before anticipated date for Practical Completion.

- 5.102 Date when final version of information for the Health and Safety File to be submitted to the Principal Designer: 1 week before the date of Practical Completion.

- 5.103 Date of handover of the Health and Safety File by Principal Designer to Client (if not the date of Practical Completion): 4 weeks after receipt of last information.

5.200 Content, layout and format

- 5.201 Typical Health and Safety File Content:

- A summary of the project, detailing the works carried out, when the work was carried out and who was involved in executing the works (Consultants and Contractors). An example index is included in Appendix H, for completion by the Principal Contractor and Designers;
- As built drawings;
- Copies of all certification, test records and the like;
- A copy of the Certificate of Practical Completion;
- A copy of the Certificate of Making Good Defects (when issued);
- A copy of any hazardous material disposal certificates;
- Copies of data sheets, brochures, manuals, operating instructions, etc. for all fittings.

5.202 Layout and format: The Principal Designer will collate all information and prepare a Health and Safety File in a standard format for presentation to the Client. The standard format for the Health and Safety File is included at Appendix H.

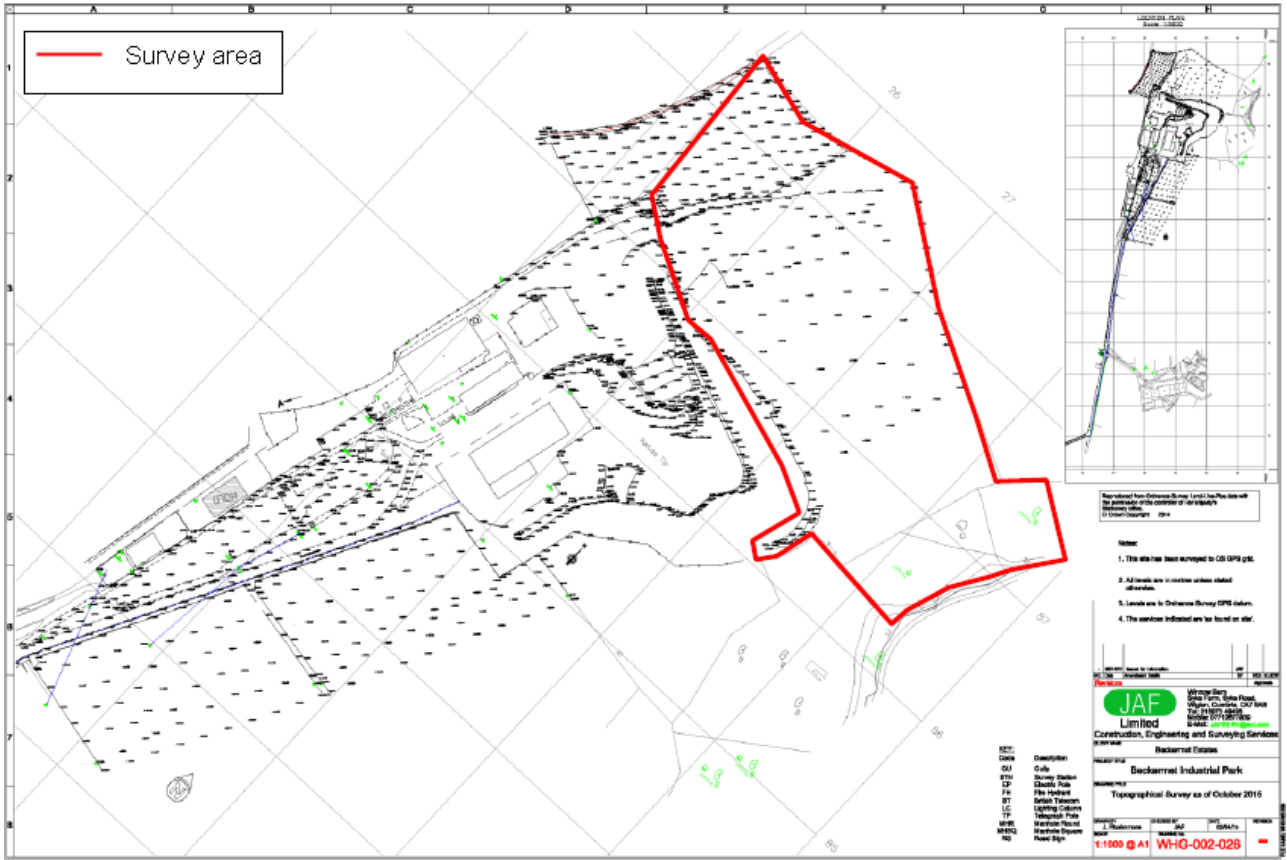
5.300 Storage of Information

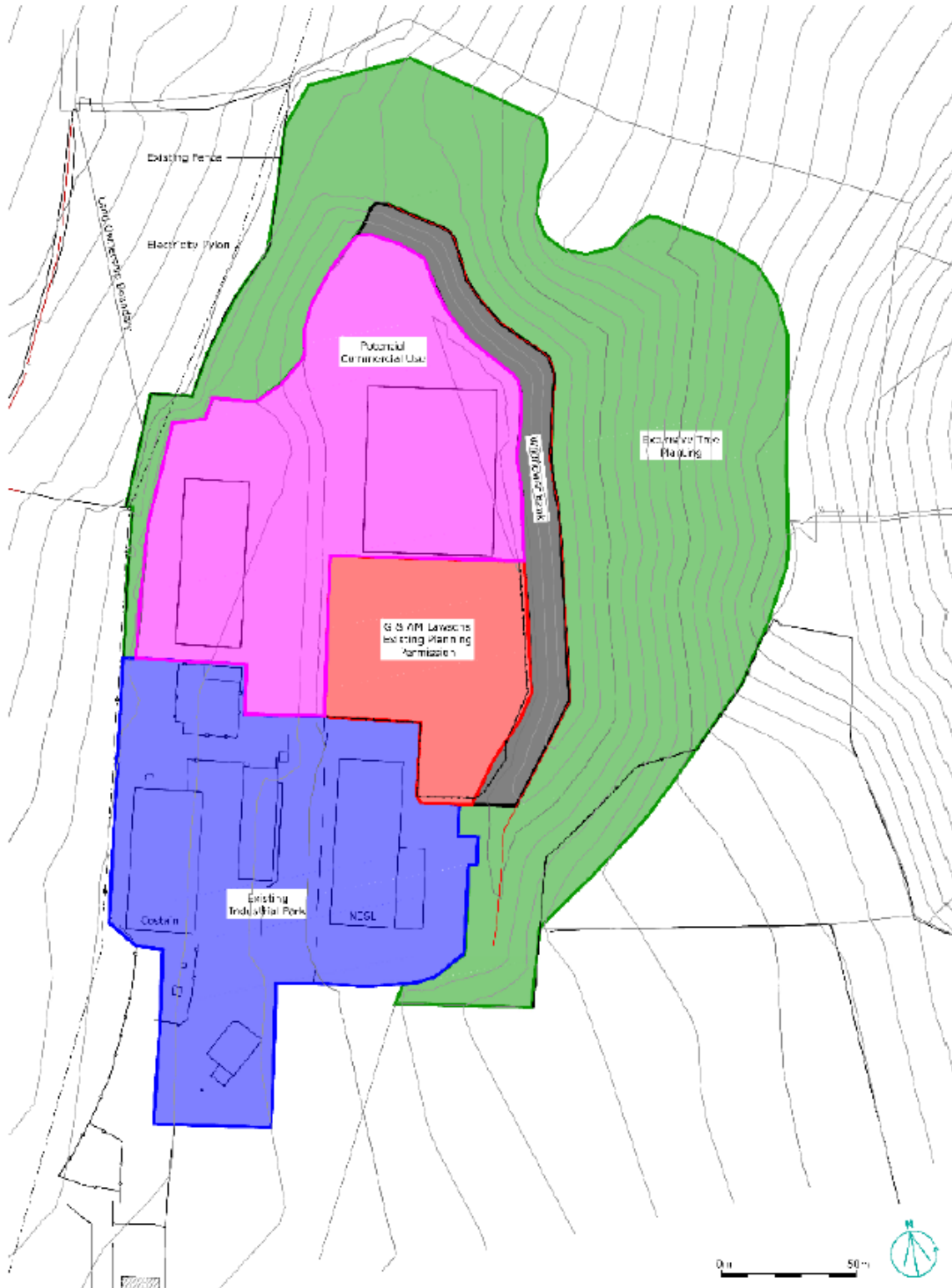
5.301 Storage of information:

- The number of Health and Safety Files to be produced in a paper format for this project is: One
- The number of Health and Safety Files to be produced in an electronic format is: Two

APPENDIX A

LOCATION PLAN





	Project	Sub. or app.	DOC	Drawn by	Checked by	Drawn by	Checked by	Scale
	Energy Coast Business Park North	2/12/08-A3	March 2016	SEC 346	Rev. 2	P. Hagan	S. Galam	1:1000
	Client	Beckermet Estates		Site		Energy Coast Business Park, Birkdale, Cantabria		
				Title		Proposed Land Use Plan		
				Status		FOR CONSULTATION		
				Notes		1. This plan is for consultation only.		

APPENDIX B

DRAWINGS & OTHER INFORMATION

Galpin Landscape Architecture

The following drawings detail the site:-

BEC 200	Existing Plan
BEC 201	Existing Vegetation
BEC 300	Proposed Layout Plan
BEC 303	Proposed Layout Plan with Tree Survey
BEC 320 r5	Proposed Sections
BEC 321 r0	Proposed Embankment Sections
BEC 330 r1	Schematic Drainage Plan
BEC 340 r2	Proposed Land Use Plan
BEC 600 r0	Levels Plan
BEC 700 r0	Planting Context Plan
BEC 701 r0	Tree Planting Plan
BEC 702 r0	Planting – Wildflower Mix 1 (Marshy Grassland)
BEC 703 r0	Planting – Wildflower Mix 2 (Grassland)
BEC 704 r0	Planting – Wildflower Mix 3 (Woodland Grassland)
BEC 705 r0	Planting – Wildflower Mix 4 + 5 (Emergent/Submerged/Edge)
BEC 711 r0	Planting Plan and Specifications

Risk (out of normal working hours)

- Unauthorised entry
- Vandalism
- Fire
- Incident or accident on the spoil heaps and woodlands

This is considered to be a medium risk

Risk (during normal working hours)

- Neighbour complaints
- Serious incident or accident

This is considered to be a medium risk

APPENDIX C

SURVEYS AND REPORTS

The following reports provide information on the site:-

Open Space: Phase One Habitat Survey and Scoping Survey for European Protected Species

Open Space: Tree and Hedge Survey

Geo Environmental Engineering:

Phase One Desk Top Study Report and Environmental Risk Assessment

APPENDIX D

DESIGNER RESIDUAL RISK REGISTER

DESIGNERS RISK ASSESSMENT

Designer:				Project: Ground Reprofilng at Beckermest North				
Job No.		C.30.147		Date: 10 th January 2017				
Ref. No.	Activity/Hazard	Potential Hazard	Population at Risk	Risk Rating			Action at Design Stage	Possible Control (Contractor)
				L	S	R		
1	Excavation work	Dust and fumes	Operatives, public, neighbouring properties	M	M	M	None	The PC should consider measures in the RAMS to keep dust and fumes to a minimum
2	Public access to the sites	The public	Operatives at risk from the actions of the public. The public are at risk from the activities on site	M	M	M	None	The PC should consider measures in the RAMS to separate the public from the works and plant.
3	Access to site	Livestock	Operatives, public, neighbouring properties	M	L	L	None	The PC should consider measures in the RAMS to separate livestock from the works and plant.
4	Locations of site	Exposure to the weather and access to emergency services	Operatives and the public	M	M	M	None	The PC should consider the location and provide suitable accommodation ,PPE and confirm the emergency arrangements in the event of an accident in an area where there may be no mobile phone signal

Designer:				Project: Ground Reprofilng at Beckermest North				
Job No.		C.30.147		Date: 10 th January 2017				
Ref. No.	Activity/Hazard	Potential Hazard	Population at Risk	Risk Rating			Action at Design Stage	Possible Control (Contractor)
				L	S	R		
5	Repair Work on boundary fencing adjacent to bodies of water	Drowning, access / egress	Operatives and the public	M	M	M	None	THE PC should review the local conditions at the time of the work to determine if Particular RAMS and precautions are needed to deal with the repair works to the boundary fencing. Prevent access by the public during the work
6	Work in contaminated ground	Exposure to unknown hazards	Operatives	M	L	L	None	The PC should arrange for an onsite Ground investigation. Prevent access to the area by the public
7	Working close to Overhead services	Electric Shock	Contractor operatives	M	M	M	Drawings should indicate any information available on existing services and their locations	Contractor to complete pre-surveys. Contractor to have appropriate training and working practices. Suitable cordoning to be provided, around areas of overhead lines
8	Working with Japanese Knotweed	Spread of spores and roots	Contractor operatives/public	M	L	L	None	THE PC should review the local conditions at the time of the work to determine if Particular RAMS and precautions are needed. Prevent access by the public during the work

Designer:				Project: Ground Reprofilng at Beckermest North				
Job No. C.30.147		Date: 10 th January 2017						
Ref. No.	Activity/Hazard	Potential Hazard	Population at Risk	Risk Rating			Action at Design Stage	Possible Control (Contractor)
				L	S	R		
9	Excavating close to existing mineshafes	Falls and ground collapse	Contractor operatives/public	M	L	L	None	THE PC should review the local conditions at the time of the work to determine if Particular RAMS and precautions are needed. Keep a watching brief. Prevent access by the public during the work
10	Working close to existing underground services	Electric shock Gas Leak Water Leak Discharge of drainage waste	Contractor operatives	M	L	L	None	Contractor to complete pre-surveys. Contractor to have appropriate training and working practices.

Key: L = Likelihood (Low, Medium, High) S = Severity (Low, Medium, High) R = Risk (Likelihood x Severity)

APPENDIX H

HEALTH AND SAFETY FILE EXAMPLE INDEX

Health & Safety File Contents

- 1.00 Introduction**
- 2.00 Project Details**
- 3.00 Existing Information**
- 4.00 Design Criteria**
- 5.00 Methods & Materials**
- 6.00 As Built Information**
- 7.00 Maintenance Procedures**
- 8.00 Residual Risk**